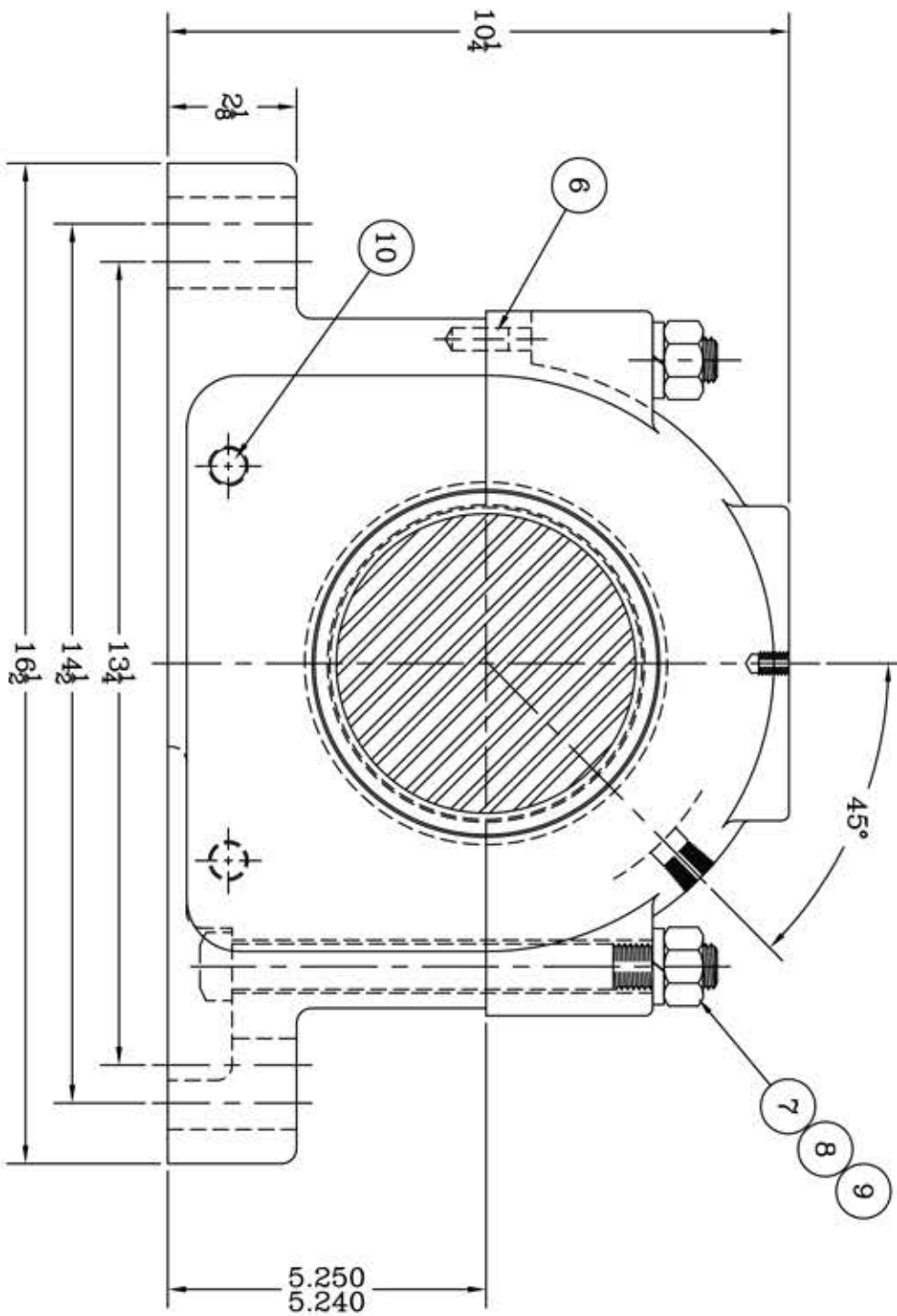
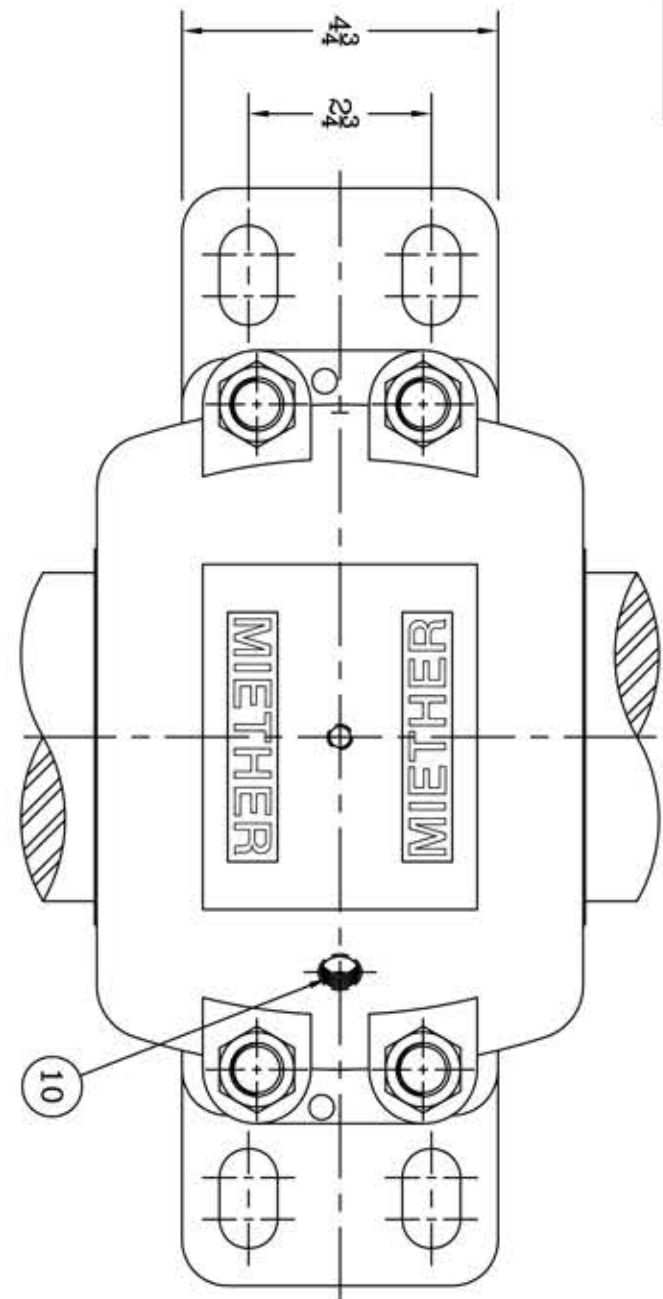
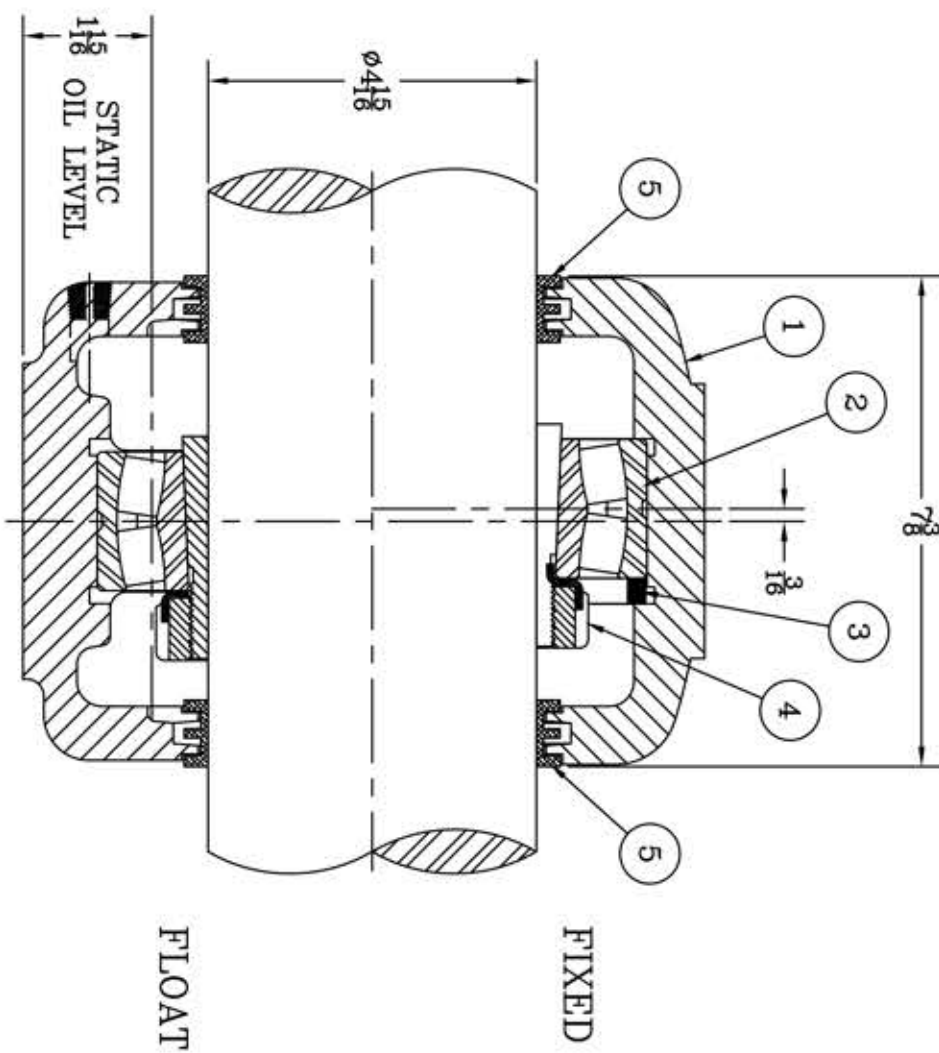


This drawing is the sole property of Miether Bearing Products and contains confidential and proprietary information. It is being provided to you for your use and may not be disclosed to any third party or used for any other purpose without Miether's prior written consent. The [materials] must be returned to the Company upon its demand. Your acceptance of these materials constitutes your acceptance of the foregoing terms.

C-35242



ITEM	DESCRIPTION	DETAIL	REQUIRED
1	HOUSING SAFD-028 04-15	C-	1 1
2	SPHERICAL ROLLER BEARING	23028K/W-33	1 1
3	STABILIZING RING SR-0-20	A-11781	1 0
4	ADAPTER SNW-3028 04-15	24485	1 1
5	TRIPLE SEAL RING LER-122	A-10499	2 2
6	DOWEL	Ø8 x 1 1/8 LONG	2 2
7	CAP BOLT SQUARE HEAD GR.5	3/10 NC x 8" LONG	4 4
8	CAP BOLT HEX. NUT	3/10 NC	4 4
9	LOCKWASHER	3/16 SPLIT MED.	4 4
10	PIPE PLUG	3/8-18 NPT	3 3



REVISIONS	
SYMBOL	DESCRIPTION
16	16
32	32
63	63
125	125
250	250
500	500
1000	1000

TOLERANCE: UNLESS OTHERWISE SPECIFIED	
FRACTIONS	± 1/32"
DECIMALS	± .005"
CASTING	± 1/16"
WELD	± 1/16"
ANGLES	± 0° 30'

A.S.I. STANDARD FINISHES

SYMBOL	FINISH
∇	C
∇	D
∇	E
∇	F
∇	G
∇	H
∇	K

AN ALCO INDUSTRIES COMPANY
BEARING PRODUCTS
ODESSA, TX. USA

SCALE	HALF	ASSEMBLY NO.
SCALE	HALF	ASSEMBLY NO.
DATE	1/4/13	DRAWING NO.
CHK.		C-35242